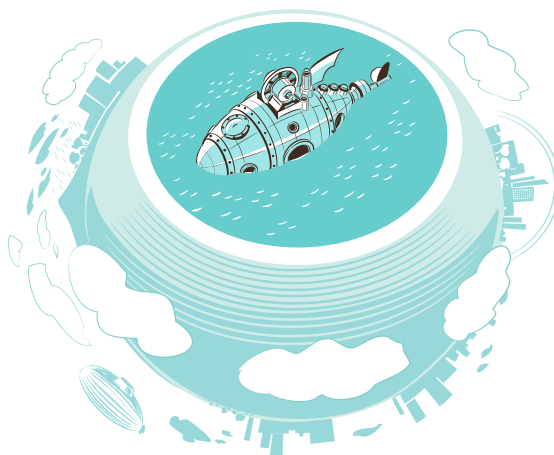


Identity Bridge



The Identity Bridge component was developed to replace the no longer supported Cisco Directory Agent (CDA). Its main function is to make identities from the Cisco Identity Service Engine (ISE) and the Cisco Identity Service Engine — Passive Identity Connector (ISE-PIC) available for further use with the Cisco Secure Firewall and ASA software.

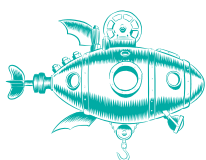
In the Cisco security ecosystem, identity access is the task of the previously mentioned **Cisco ISE** or **Cisco ISE-PIC** products. These two products are the ones that have a connector set up in Customer implementations to domain controllers and therefore have 100% up-to-date visibility of the user's identity tied to the IP address. We build our solution on both of these products. The Cisco ISE or Cisco ISE-PIC can communicate via the pxGrid protocol with our Identity Bridge component, which translates the identity information into a language that the Cisco Secure firewall with ASA software understands. With the communication line set up in this way, the Cisco Secure Firewall with ASA software can act as an Identity firewall, perform an initial full synchronization of the identity database, and receive subsequent incremental updates through the Identity Bridge. You can see a diagram of the communication between the components in the figure to the right.



The Identity Bridge itself is a software component running on top of the Linux operating system with .NET support. The Identity Bridge communicates with Cisco ISE or Cisco ISE-PIC via the pxGrid 2.0 protocol. For this reason, it is important to have Cisco ISE or Cisco ISE-PIC version 2.3+ installed. The ASA image on the Cisco Secure firewall must be at least version 9.0+. Hardware requirements for Identity Bridge are minimal.

What does Identity Bridge allow you to do?

- work with user identity
- increase security and visibility
- use user identity in security policies
- replace the no longer supported Cisco Directory Agent component



Trust the Strong

ALEF NULA, a.s. | Pernerova 691/42, 186 00 Praha 8,
Česká republika | Phone: +420 225 090 240
cz-sales@alefnula.com | alefnula.com